

Current part is item (30) on diagram. Available at [www.oshkoshequipment.com](http://www.oshkoshequipment.com)

(1) (a) FIG. NO.	(2) (b) ITEM NO.	(3) SMR CODE	(4) NATIONAL STOCK NUMBER	(4) PART NUMBER	(5) FSCM	(6) DESCRIPTION USABLE ON CODE	(7) U/M	(8) INC IN UNIT
1004-STEERING MECHANISM								
107	3	PAOZZ	4730-00-050-4208	MS15003-1	96906	FITTING,LUBRICATION:UPPER AND LOWER SHEAVE	EA	2
107	26	PAOZZ	5340-00-707-1100	7071100	19207	CLAMP,LOOP:INNER,STEERING KNUCKLE FLANGE BOOT	EA	2
107	27	PAOZZ	5310-00-707-1097	7071097	19207	NUT,PLAIN,HEXAGON:STEERING KNUCKLE FLANGE CLAMP	EA	1
107	28	PAOZZ	5305-00-752-1693	7521693	19207	SCREW,MACHINE: STEERING KNUCKLE FLANGE CLAMP	EA	1
107	29	XAOZZ		7071085	19207	CLAMP	EA	1
107	30	PAOZZ	5340-00-707-1099	7071099	19207	CLAMP,LOOP: OUTER,STEERING KNUCKLE FLANGE BOOT	EA	2
107	31	PAOZZ	5310-00-707-1097	7071097	19207	NUT,PLAIN,HEXAGON: STEERING KNUCKLE FLANGE CLAMP	EA	1
107	32	PAOZZ	5305-00-752-1693	7521693	19207	SCREW,MACHINE: STEERING KNUCKLE FLANGE,CLAMP	EA	1
107	33	XAOZZ		7071084	19207	CLAMP	EA	1
107	34	PAOZZ	2530-00-741-0883	7410883	19207	BOOT,STEERING KNUCKLE: FLANGE	EA	2
107	35	PAOZZ	4820-00-726-4719	5196397	00000	VALVE,RELIEF	EA	1
108	1	PAOZZ	5306-00-182-9267	10896726	19207	BOLT, MACHINE	EA	16
108	2	PAOZZ	5310-00-584-5272	MS35338-48	96906	WASHER,LOCK	EA	16
108	3	PAOZZ	2520-00-752-1861	7521861	19207	FLANGE,AXLE SHAFT: DRIVE W/PLUG	EA	2
108	4	PAOZZ	5340-00-752-1762	7521762	19207	PLUG, EXPANSION	EA	1
108	5	XAOZZ		8757694	19207	FLANGE	EA	1
108	6	PAOZZ	5330-00-599-4230	7521787	19207	GASKET: DRIVE FLANGE	EA	2
108	7	PAOZZ	5310-00-220-2665	10896720	19207	NUT,PLAIN,OCTAGON:ADJUSTING BEARING	EA	4
108	8	PAOZZ	5310-00-752-1650	10896695	19207	WASHER,KEY:BEARING ADJUSTING NUT	EA	2
108	9	PAOZZ	3110-00-087-9881	10948079	19207	BEARING ASSEMBLY: HUB,OUTER	EA	2
108	10	PBOFF	2530-00-193-8187	7529053	19207	HUB AND DRUM ASSEMBLY: LEFT (COMPONENTS SAME AS HUB AND DRUM ASSEMBLY, NSN 2530-00-193-8183, EXCEPT WHERE INDIVIDUAL COMPONENTS ARE ANNOTATED) (TO BE REPAIRED USING COMPONENTS ONLY)	EA	1
108	10	PBOZZ	2530-00-193-8183	7529054	19207	HUB AND DRUM ASSEMBLY: RIGHT (TO BE REPAIRED USING COMPONENTS ONLY)	EA	1
108	11	PAOZZ	5310-00-732-0559	MS51968-8	96906	NUT,SELF-LOCKING	EA	1
108	12	PAOZZ	5310-00-637-9541	MS35338-46	96906	WASHER,LOCK	EA	10
108	13	PAOZZ	2530-00-134-5121	10896733	19207	COVER, INSPECTION	EA	1



Current part is item (30) on diagram. Available at [www.oshkoshequipment.com](http://www.oshkoshequipment.com)

Current part is item (30) on diagram. Available at [www.oshkoshequipment.com](http://www.oshkoshequipment.com)

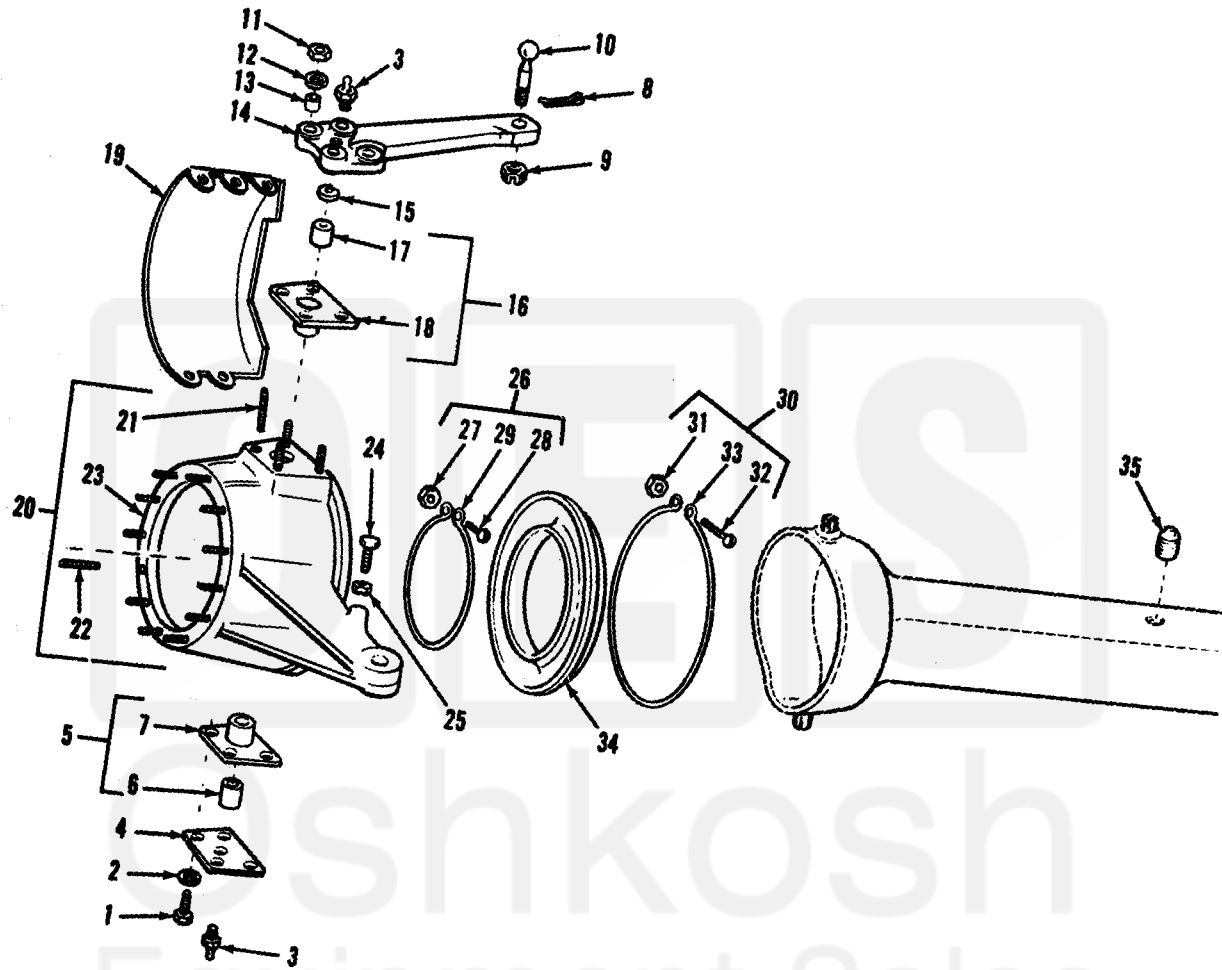


Figure 107. Front steering.

TA 031178

Current part is item (30) on diagram. Available at [www.oshkoshequipment.com](http://www.oshkoshequipment.com)